

From: [Merluccio, Juliana](#)
To: [Thomas, Sue](#)
Subject: Metadata example
Date: Thursday, February 28, 2019 1:14:07 PM
Attachments: [Eelgrass Dungeness Harbor 1987-2016 Metadata.pdf](#)
Importance: High

Here is what I completed so far for the Eelgrass file used in the maps. I filled out all the required fields and then some of what I thought were important. For this file I think your input would be most helpful on the Summary and Description. Also for this file and for others what do we want to say about use/distribution, also it is easy change this info if we need to distribute it.

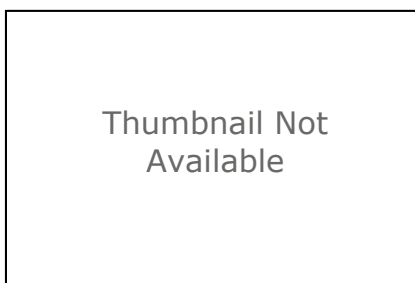
All that data after the heading FGDC Metadata (read-only) is duplicate.

--

Juliana Merluccio
Biological Technician
Washington Maritime NWRC
715 Holgerson Rd
Sequim, WA 98382
360-457-8451

Eelgrass_DungHarbor_1987_2016

File Geodatabase Feature Class



Tags

biota, Estuary, Biology, Management, Monitoring, Ecology, Natural Resources, Environment, Conservation, Ecosystem, Marine

Summary

Purpose of this file is to combine data from various years of Eelgrass surveys into one dataset for ease of access and to view changes in distribution over time.

Description

Location and condition of Common Eelgrass (*Zostera marina*) around Dungeness Bay, WA from 1987 to 2016. Note, survey methods and attributes collected were different across years. Not all eelgrass surveyed from 1987 is included in this file. In 2016, only the parcel leased by Jamestown S'Klallam Tribe and the immediately adjacent areas were sampled for Eelgrass. References for data: Norris, J.G., and I.E. Fraser. 2009. Eelgrass mapping in Crescent Bay, Freshwater Bay, Port Angeles Harbor, and Dungeness Bay: June 2009. Final report submitted to the Clallam County Marine Resources Committee. Washington Maritime National Wildlife Refuge Complex. 2016 Eelgrass mapping near Jamestown Lease Parcel. Wilson, Ulrich W., 1988. Progress Report: Eelgrass *Zostera marina* in the Dungeness Bay Area, Washington during 1987. Nisqually National Wildlife Refuge Complex. Wilson, Ulrich W., 1993. Progress Report: Eelgrass *Zostera marina* in the Dungeness Bay Area, Washington during 1993. U.S. Fish and Wildlife Service—Coastal Refuges Office

Credits

There are no credits for this item.

Use limitations

These data should not be distributed to users unless distribution is explicitly granted. Please check sources, scale, accuracy, currency and other available information. Please confirm that you are using the most recent copy of both data and metadata. Acknowledgement of the USFWS would be appreciated.

Extent

| | | | |
|--------------|-------------|--------------|-------------|
| West | -123.171631 | East | -123.046771 |
| North | 48.187458 | South | 48.109083 |

Scale Range

There is no scale range for this item.

ArcGIS Metadata ►

Topics and Keywords ►

THEMES OR CATEGORIES OF THE RESOURCE environment, biota

THEME KEYWORDS Estuary, Biology, Management, Monitoring, Ecology, Natural Resources, Environment, Conservation, Ecosystem, Marine

THESAURUS ►

TITLE EPA GIS Keyword Thesaurus

[Hide Thesaurus ▲](#)

THEME KEYWORDS biota

THESAURUS ►

TITLE ISO 19115 Topic Category

[Hide Thesaurus ▲](#)

[Hide Topics and Keywords ▲](#)

Citation ►

TITLE Eelgrass_DungHarbor_1987_2016

PUBLICATION DATE 2019-02-27

PRESENTATION FORMATS digital map

[Hide Citation ▲](#)

Citation Contacts ►

RESPONSIBLE PARTY

ORGANIZATION'S NAME US Fish & Wildlife Service

CONTACT'S ROLE originator

RESPONSIBLE PARTY

ORGANIZATION'S NAME US Fish & Wildlife Service

CONTACT'S ROLE publisher

CONTACT INFORMATION ►

ADDRESS

DELIVERY POINT Sequim, WA

[Hide Contact information ▲](#)

[Hide Citation Contacts ▲](#)

Resource Details ►

DATASET LANGUAGES English (UNITED STATES)

STATUS completed

SPATIAL REPRESENTATION TYPE vector

SUPPLEMENTAL INFORMATION
USFWS-Created

PROCESSING ENVIRONMENT Version 6.2 (Build 9200) ; Esri ArcGIS 10.5.0.6491

[Hide Resource Details ▲](#)

Extents ►

EXTENT

DESCRIPTION

Ground condition

TEMPORAL EXTENT

DATE AND TIME 1987-07-14

TEMPORAL EXTENT

DATE AND TIME 2016-07-19

EXTENT

GEOGRAPHIC EXTENT

BOUNDING RECTANGLE

WEST LONGITUDE -123.171631

EAST LONGITUDE -123.046771

SOUTH LATITUDE 48.109083

NORTH LATITUDE 48.187458

EXTENT

GEOGRAPHIC EXTENT

BOUNDING RECTANGLE

EXTENT TYPE Extent used for searching

WEST LONGITUDE -123.171631

EAST LONGITUDE -123.046771

NORTH LATITUDE 48.187458

SOUTH LATITUDE 48.109083

EXTENT CONTAINS THE RESOURCE Yes

[Hide Extents ▲](#)

Resource Maintenance ►

RESOURCE MAINTENANCE

[Hide Resource Maintenance ▲](#)

Resource Constraints ►

LEGAL CONSTRAINTS

LIMITATIONS OF USE

Although these data have been processed successfully on a computer system at the U.S. Fish and Wildlife, no warranty expressed or implied is made regarding the accuracy or utility of the data on any other system or for general or scientific purposes, nor shall the act of distribution constitute any such warranty. It is also strongly recommended that careful attention be paid to the contents of the metadata file associated with these data to evaluate data set limitations, restrictions or intended use. The U.S. Fish and Wildlife shall not be held liable for improper or incorrect use of the data described and/or contained herein

OTHER CONSTRAINTS

These Data Are Restricted to Internal USFWS Personnel Only

SECURITY CONSTRAINTS

CLASSIFICATION SYSTEM <http://project-open-data.github.io/schema/#accessLevel>

ADDITIONAL RESTRICTIONS

Standard Technical Controls

CONSTRAINTS

LIMITATIONS OF USE

These data should not be distributed to users unless distribution is explicitly granted. Please check sources, scale, accuracy, currency and other available information. Please confirm that you are using the most recent copy of both data and metadata. Acknowledgement of the USFWS would be appreciated.

[Hide Resource Constraints ▲](#)

Spatial Reference ►

REFERENCE SYSTEM IDENTIFIER

VALUE 4326

CODESPACE EPSG

VERSION 6.14(3.0.1)

[Hide Spatial Reference ▲](#)

Spatial Data Properties ►

VECTOR ►

LEVEL OF TOPOLOGY FOR THIS DATASET geometry only

GEOMETRIC OBJECTS

OBJECT TYPE composite

OBJECT COUNT 23

[Hide Vector ▲](#)

[Hide Spatial Data Properties ▲](#)

Data Quality ►

SCOPE OF QUALITY INFORMATION ►

RESOURCE LEVEL dataset

[Hide Scope of quality information ▲](#)

DATA QUALITY REPORT - CONCEPTUAL CONSISTENCY ►

MEASURE DESCRIPTION

Tests of Valid Values

[Hide Data quality report - Conceptual consistency ▲](#)

DATA QUALITY REPORT - COMPLETENESS OMISSION ►

MEASURE DESCRIPTION

Survey methods and attributes collected were different across years. Not all eelgrass surveyed from 1987 is included in this file. In 2016, only the parcel leased by Jamestown S'Klallam Tribe and the immediately adjacent areas were sampled for Eelgrass.

[Hide Data quality report - Completeness omission ▲](#)

DATA QUALITY REPORT - ABSOLUTE EXTERNAL POSITIONAL ACCURACY ►

DIMENSION horizontal

MEASURE DESCRIPTION

Data were collected using methods that have unknown accuracy. Accuracy of 0-15 meters likely.

[Hide Data quality report - Absolute external positional accuracy ▲](#)

DATA QUALITY REPORT - ABSOLUTE EXTERNAL POSITIONAL ACCURACY ►

DIMENSION vertical

MEASURE DESCRIPTION

Not applicable, no vertical position recorded.

[Hide Data quality report - Absolute external positional accuracy ▲](#)

[Hide Data Quality ▲](#)

Lineage ►

PROCESS STEP ►

WHEN THE PROCESS OCCURRED 2019-02-12

DESCRIPTION

Added digitalized Wilson 1987 data.

[Hide Process step ▲](#)

PROCESS STEP ►

WHEN THE PROCESS OCCURRED 2019-02-11

DESCRIPTION

Merged all eelgrass polygon data (WM-NWRC 2016, Norris et al. 2009, and Wilson 1993) to create this file.

Hide Process step ▲

PROCESS STEP ►

WHEN THE PROCESS OCCURRED 2019-02-12

DESCRIPTION

Digitalized Wilson 1987 map, only used polygons in Inner Dungeness Bay (a.k.a. Dungeness Harbor)

Hide Process step ▲

SOURCE DATA ►

DESCRIPTION

Location of eelgrass beds.

SOURCE MEDIUM NAME online link

SOURCE CITATION ►

TITLE Eelgrass mapping in Crescent Bay, Freshwater Bay, Port Angeles Harbor, and Dungeness Bay: June 2009.

ALTERNATE TITLES Norr09

PUBLICATION DATE 2009-01-01

SERIES

NAME NA

ISSUE NA

RESPONSIBLE PARTY

ORGANIZATION'S NAME Clallam County Marine Resources Committee

CONTACT'S ROLE publisher

RESPONSIBLE PARTY

ORGANIZATION'S NAME Clallam County Marine Resources Committee

CONTACT'S ROLE originator

RESOURCE LOCATION ONLINE

LOCATION <https://www.clallamcountymrc.org/resources/>

RESOURCE LOCATION ONLINE

LOCATION http://www.nwstraits.org/media/1608/cla-2009-0040_elwhafinalreport_2009.pdf

RESOURCE LOCATION ONLINE

LOCATION http://www.dnr.wa.gov/Publications/aqr_mva_mrc_2011.pdf

Hide Source citation ▲

EXTENT OF THE SOURCE DATA

DESCRIPTION

publication date

TEMPORAL EXTENT

DATE AND TIME 2009-01-01

[Hide Source data ▲](#)

SOURCE DATA ►

DESCRIPTION

Location and condition of eelgrass beds.

SOURCE MEDIUM NAME online link

SOURCE CITATION ►

TITLE 2016 Eelgrass mapping near Jamestown Lease Parcel.

ALTERNATE TITLES Wash16

PUBLICATION DATE 2016-01-01

SERIES

NAME NA

ISSUE NA

RESPONSIBLE PARTY

ORGANIZATION'S NAME Washington Maritime National Wildlife Refuge Complex

CONTACT'S ROLE publisher

CONTACT INFORMATION ►

ADDRESS

DELIVERY POINT Washington Maritime National Wildlife Refuge Complex

[Hide Contact information ▲](#)

RESPONSIBLE PARTY

ORGANIZATION'S NAME Washington Maritime National Wildlife Refuge Complex

CONTACT'S ROLE originator

[Hide Source citation ▲](#)

EXTENT OF THE SOURCE DATA

DESCRIPTION

publication date

TEMPORAL EXTENT

DATE AND TIME 2016-01-01

[Hide Source data ▲](#)

SOURCE DATA ►

DESCRIPTION

Location and condition of eelgrass beds.

SOURCE MEDIUM NAME hardcopy—printing on paper

SOURCE CITATION ►

TITLE Progress Report: Eelgrass *Zostera marina* in the Dungeness Bay Area, Washington during 1993.

ALTERNATE TITLES Wil93

PUBLICATION DATE 1993-01-01

SERIES

NAME Refuge Reports

ISSUE NA

RESPONSIBLE PARTY

ORGANIZATION'S NAME Washington Maritime National Wildlife Refuge Complex

CONTACT'S ROLE publisher

CONTACT INFORMATION ►

ADDRESS

DELIVERY POINT Washington Maritime National Wildlife Refuge Complex

[Hide Contact information ▲](#)

RESPONSIBLE PARTY

ORGANIZATION'S NAME Washington Maritime National Wildlife Refuge Complex

CONTACT'S ROLE originator

[Hide Source citation ▲](#)

EXTENT OF THE SOURCE DATA

DESCRIPTION

publication date

TEMPORAL EXTENT

DATE AND TIME 1993-01-01

[Hide Source data ▲](#)

SOURCE DATA ►

DESCRIPTION

Location and condition of eelgrass beds.

SOURCE MEDIUM NAME hardcopy—printing on paper

SOURCE CITATION ►

TITLE Progress Report: Eelgrass *Zostera marina* in the Dungeness Bay Area, Washington during 1987.

ALTERNATE TITLES Wil88

PUBLICATION DATE 1988-01-01

SERIES

NAME Refuge reports

ISSUE NA

RESPONSIBLE PARTY

ORGANIZATION'S NAME Washington Maritime National Wildlife Refuge Complex

CONTACT'S ROLE publisher

CONTACT INFORMATION ►

ADDRESS

DELIVERY POINT NA

[Hide Contact information ▲](#)

RESPONSIBLE PARTY

ORGANIZATION'S NAME Washington Maritime National Wildlife Refuge Complex
CONTACT'S ROLE originator

[Hide Source citation ▲](#)

EXTENT OF THE SOURCE DATA

DESCRIPTION

publication date

TEMPORAL EXTENT

DATE AND TIME 1987-01-01

[Hide Source data ▲](#)

[Hide Lineage ▲](#)

Distribution ►

DISTRIBUTOR ►

[Hide Distributor ▲](#)

DISTRIBUTION FORMAT

NAME File Geodatabase Feature Class

[Hide Distribution ▲](#)

Fields ►

DETAILS FOR OBJECT **Eelgrass_DungHarbor_1987_2016** ►

DEFINITION

1987-2016 eelgrass surveyys in Dungeness Bay, WA

DEFINITION SOURCE

U.S. Fish and Wildlife

FIELD **OBJECTID** ►

FIELD DESCRIPTION

Internal feature number.

DESCRIPTION SOURCE

Esri

DESCRIPTION OF VALUES

Sequential unique whole numbers that are automatically generated.

[Hide Field OBJECTID ▲](#)

FIELD Shape ▶**FIELD DESCRIPTION**

Feature geometry.

DESCRIPTION SOURCE

Esri

DESCRIPTION OF VALUES

Coordinates defining the features.

Hide Field Shape ▲

FIELD ACRES ▶**FIELD DESCRIPTION**

Acerage of polygon

DESCRIPTION SOURCE

U.S. Fish and Wildlife Service

DESCRIPTION OF VALUES

Positive real numbers that are automatically generated.

Hide Field ACRES ▲

FIELD Shape_Length ▶**FIELD DESCRIPTION**

Length of feature in internal units.

DESCRIPTION SOURCE

Esri

DESCRIPTION OF VALUES

Positive real numbers that are automatically generated.

Hide Field Shape_Length ▲

FIELD Shape_Area ▶**FIELD DESCRIPTION**

Area of feature in internal units squared.

DESCRIPTION SOURCE

Esri

DESCRIPTION OF VALUES

Positive real numbers that are automatically generated.

Hide Field Shape_Area ▲

FIELD Year ▶

FIELD DESCRIPTION

Year survey was conducted

DESCRIPTION SOURCE

U.S. Fish and Wildlife Service

DESCRIPTION OF VALUES

Year

Hide Field Year ▲**FIELD State_of_Eelgrass_Bed** ▶

FIELD DESCRIPTION

Condition of the eelgrass patch, definitions/methods varied by survey.

DESCRIPTION SOURCE

U.S. Fish and Wildlife Service

DESCRIPTION OF VALUES

Text description of eelgrass condition (ex: dense).

Hide Field State_of_Eelgrass_Bed ▲*Hide Details for object Eelgrass_DungHarbor_1987_2016* ▲*Hide Fields* ▲**Metadata Details** ▶

METADATA LANGUAGE English (UNITED STATES)

METADATA CHARACTER SET utf8 - 8 bit UCS Transfer Format

SCOPE OF THE DATA DESCRIBED BY THE METADATA dataset

SCOPE NAME dataset

LAST UPDATE 2019-02-28

ARCGIS METADATA PROPERTIES

METADATA FORMAT ESRI-ISO

Hide Metadata Details ▲**Metadata Maintenance** ▶

MAINTENANCE

DATE OF NEXT UPDATE 2023-02-28

UPDATE FREQUENCY unknown

[Hide Metadata Maintenance ▲](#)

FGDC Metadata (read-only) ►

Identification ►

CITATION

CITATION INFORMATION

ORIGINATOR US Fish & Wildlife Service

PUBLICATION DATE 2019-02-27

TITLE

Eelgrass_DungHarbor_1987_2016

PUBLICATION INFORMATION

PUBLICATION PLACE Sequim, WA

PUBLISHER US Fish & Wildlife Service

DESCRIPTION

ABSTRACT

Location and condition of Common Eelgrass (*Zostera marina*) around Dungeness Bay, WA from 1987 to 2016. Note, survey methods and attributes collected were different across years. Not all eelgrass surveyed from 1987 is included in this file. In 2016, only the parcel leased by Jamestown S'Klallam Tribe and the immediately adjacent areas were sampled for Eelgrass.

References for data:

Norris, J.G., and I.E. Fraser. 2009. Eelgrass mapping in Crescent Bay, Freshwater Bay, Port Angeles Harbor, and Dungeness Bay: June 2009. Final report submitted to the Clallam County Marine Resources Committee.

Washington Maritime National Wildlife Refuge Complex. 2016 Eelgrass mapping near Jamestown Lease Parcel.

Wilson, Ulrich W., 1988. Progress Report: Eelgrass *Zostera marina* in the Dungeness Bay Area, Washington during 1987. Nisqually National Wildlife Refuge Complex.

Wilson, Ulrich W., 1993. Progress Report: Eelgrass *Zostera marina* in the Dungeness Bay Area, Washington during 1993. U.S. Fish and Wildlife Service—Coastal Refuges Office

PURPOSE

Purpose of this file is to combine data from various years of Eelgrass surveys into one dataset for ease of access and to view changes in distribution over time.

SUPPLEMENTAL INFORMATION

USFWS-Created

TIME PERIOD OF CONTENT

TIME PERIOD INFORMATION

MULTIPLE DATES/TIMES

SINGLE DATE/TIME

CALENDAR DATE 1987-07-14

SINGLE DATE/TIME

CALENDAR DATE 2016-07-19

CURRENTNESS REFERENCE

Ground condition

STATUS

PROGRESS Complete

MAINTENANCE AND UPDATE FREQUENCY asNeeded

SPATIAL DOMAIN

BOUNDING COORDINATES

WEST BOUNDING COORDINATE -123.171631

EAST BOUNDING COORDINATE -123.046771
 NORTH BOUNDING COORDINATE 48.187458
 SOUTH BOUNDING COORDINATE 48.109083

KEYWORDS

THEME

THEME KEYWORD THESAURUS ISO 19115 Topic Category
 THEME KEYWORD biota

THEME

THEME KEYWORD THESAURUS EPA GIS Keyword Thesaurus
 THEME KEYWORD Biology
 THEME KEYWORD Conservation
 THEME KEYWORD Ecology
 THEME KEYWORD Ecosystem
 THEME KEYWORD Environment
 THEME KEYWORD Estuary
 THEME KEYWORD Management
 THEME KEYWORD Marine
 THEME KEYWORD Monitoring
 THEME KEYWORD Natural Resources

ACCESS CONSTRAINTS

These Data Are Restricted to Internal USFWS Personnel Only

USE CONSTRAINTS

These data should not be distributed to users unless distribution is explicitly granted.
 Please check sources, scale, accuracy, currency and other available information. Please
 confirm that you are using the most recent copy of both data and metadata.
 Acknowledgement of the USFWS would be appreciated.

SECURITY INFORMATION

SECURITY CLASSIFICATION SYSTEM <http://project-open-data.github.io/schema/#accessLevel>
 SECURITY CLASSIFICATION non-public
 SECURITY HANDLING DESCRIPTION Standard Technical Controls

Hide Identification ▲

Data Quality ►

LOGICAL CONSISTENCY REPORT

Tests of Valid Values

COMPLETENESS REPORT

Survey methods and attributes collected were different across years. Not all eelgrass
 surveyed from 1987 is included in this file. In 2016, only the parcel leased by Jamestown
 S'Klallam Tribe and the immediately adjacent areas were sampled for Eelgrass.

POSITIONAL ACCURACY

HORIZONTAL POSITIONAL ACCURACY

HORIZONTAL POSITIONAL ACCURACY REPORT

Data were collected using methods that have unknown accuracy. Accuracy of 0-15
 meters likely.

VERTICAL POSITIONAL ACCURACY

VERTICAL POSITIONAL ACCURACY REPORT

Not applicable, no vertical position recorded.

LINEAGE

SOURCE INFORMATION

SOURCE CITATION

CITATION INFORMATION

ORIGINATOR Washington Maritime National Wildlife Refuge Complex

PUBLICATION DATE 1988

TITLE

Progress Report: Eelgrass *Zostera marina* in the Dungeness Bay Area, Washington during 1987.

SERIES INFORMATION

SERIES NAME Refuge reports

ISSUE IDENTIFICATION NA

PUBLICATION INFORMATION

PUBLICATION PLACE NA

PUBLISHER Washington Maritime National Wildlife Refuge Complex

TYPE OF SOURCE MEDIA paper

SOURCE TIME PERIOD OF CONTENT

TIME PERIOD INFORMATION

SINGLE DATE/TIME

CALENDAR DATE 1987

SOURCE CURRENTNESS REFERENCE

publication date

SOURCE CITATION ABBREVIATION

Wil88

SOURCE CONTRIBUTION

Location and condition of eelgrass beds.

SOURCE INFORMATION

SOURCE CITATION

CITATION INFORMATION

ORIGINATOR Washington Maritime National Wildlife Refuge Complex

PUBLICATION DATE 1993

TITLE

Progress Report: Eelgrass *Zostera marina* in the Dungeness Bay Area, Washington during 1993.

SERIES INFORMATION

SERIES NAME Refuge Reports

ISSUE IDENTIFICATION NA

PUBLICATION INFORMATION

PUBLICATION PLACE Washington Maritime National Wildlife Refuge Complex

PUBLISHER Washington Maritime National Wildlife Refuge Complex

TYPE OF SOURCE MEDIA paper

SOURCE TIME PERIOD OF CONTENT

TIME PERIOD INFORMATION

SINGLE DATE/TIME

CALENDAR DATE 1993

SOURCE CURRENTNESS REFERENCE

publication date

SOURCE CITATION ABBREVIATION

Wil93

SOURCE CONTRIBUTION

Location and condition of eelgrass beds.

SOURCE INFORMATION

SOURCE CITATION

CITATION INFORMATION

ORIGINATOR Clallam County Marine Resources Committee

PUBLICATION DATE 2009

TITLE

Eelgrass mapping in Crescent Bay, Freshwater Bay, Port Angeles Harbor, and Dungeness Bay: June 2009.

SERIES INFORMATION

SERIES NAME NA

ISSUE IDENTIFICATION NA
 PUBLICATION INFORMATION
 PUBLISHER Clallam County Marine Resources Committee
 ONLINE LINKAGE http://www.nwstraits.org/media/1608/cla-2009-0040_elwhafinalreport_2009.pdf
 ONLINE LINKAGE <https://www.clallamcountymrc.org/resources/>
 ONLINE LINKAGE http://www.dnr.wa.gov/Publications/aqr_mva_mrc_2011.pdf

TYPE OF SOURCE MEDIA online
 SOURCE TIME PERIOD OF CONTENT
 TIME PERIOD INFORMATION
 SINGLE DATE/TIME
 CALENDAR DATE 2009
 SOURCE CURRENTNESS REFERENCE
 publication date
 SOURCE CITATION ABBREVIATION
 Norr09
 SOURCE CONTRIBUTION
 Location of eelgrass beds.
 SOURCE INFORMATION
 SOURCE CITATION
 CITATION INFORMATION
 ORIGINATOR Washington Maritime National Wildlife Refuge Complex
 PUBLICATION DATE 2016
 TITLE
 2016 Eelgrass mapping near Jamestown Lease Parcel.
 SERIES INFORMATION
 SERIES NAME NA
 ISSUE IDENTIFICATION NA
 PUBLICATION INFORMATION
 PUBLICATION PLACE Washington Maritime National Wildlife Refuge Complex
 PUBLISHER Washington Maritime National Wildlife Refuge Complex

TYPE OF SOURCE MEDIA computer program
 SOURCE TIME PERIOD OF CONTENT
 TIME PERIOD INFORMATION
 SINGLE DATE/TIME
 CALENDAR DATE 2016
 SOURCE CURRENTNESS REFERENCE
 publication date
 SOURCE CITATION ABBREVIATION
 Wash16
 SOURCE CONTRIBUTION
 Location and condition of eelgrass beds.
 PROCESS STEP
 PROCESS DESCRIPTION
 Merged all eelgrass polygon data (WM-NWRC 2016, Norris et al. 2009, and Wilson 1993) to create this file.
 PROCESS DATE 2019-02-11

PROCESS STEP
 PROCESS DESCRIPTION
 Digitalized Wilson 1987 map, only used polygons in Inner Dungeness Bay (a.k.a. Dungeness Harbor)
 PROCESS DATE 2019-02-12

PROCESS STEP
 PROCESS DESCRIPTION

Added digitalized Wilson 1987 data.
PROCESS DATE 2019-02-12

Hide Data Quality ▲

Spatial Reference ►

HORIZONTAL COORDINATE SYSTEM DEFINITION

GEOGRAPHIC

LATITUDE RESOLUTION 0.000000001
LONGITUDE RESOLUTION 0.000000001
GEOGRAPHIC COORDINATE UNITS Decimal degrees

GEODETTIC MODEL

HORIZONTAL DATUM NAME North American Datum of 1983
ELLIPSOID NAME Geodetic Reference System 1980
SEMI-MAJOR AXIS 6378137.000000
DENOMINATOR OF FLATTENING RATIO 298.257222

Hide Spatial Reference ▲

Entities and Attributes ►

DETAILED DESCRIPTION

ENTITY TYPE

ENTITY TYPE LABEL Eelgrass_DungHarbor_1987_2016
ENTITY TYPE DEFINITION
1987-2016 eelgrass surveys in Dungeness Bay, WA
ENTITY TYPE DEFINITION SOURCE U.S. Fish and Wildlife

ATTRIBUTE

ATTRIBUTE LABEL OBJECTID
ATTRIBUTE DEFINITION
Internal feature number.
ATTRIBUTE DEFINITION SOURCE Esri
ATTRIBUTE DOMAIN VALUES
UNREPRESENTABLE DOMAIN
Sequential unique whole numbers that are automatically generated.

ATTRIBUTE

ATTRIBUTE LABEL Shape
ATTRIBUTE DEFINITION
Feature geometry.
ATTRIBUTE DEFINITION SOURCE Esri
ATTRIBUTE DOMAIN VALUES
UNREPRESENTABLE DOMAIN
Coordinates defining the features.

ATTRIBUTE

ATTRIBUTE LABEL ACRES
ATTRIBUTE DEFINITION
Acerage of polygon
ATTRIBUTE DEFINITION SOURCE U.S. Fish and Wildlife Service
ATTRIBUTE DOMAIN VALUES
UNREPRESENTABLE DOMAIN
Positive real numbers that are automatically generated.

ATTRIBUTE

ATTRIBUTE LABEL Shape_Length

ATTRIBUTE DEFINITION

Length of feature in internal units.

ATTRIBUTE DEFINITION SOURCE Esri

ATTRIBUTE DOMAIN VALUES

UNREPRESENTABLE DOMAIN

Positive real numbers that are automatically generated.

ATTRIBUTE

ATTRIBUTE LABEL Shape_Area

ATTRIBUTE DEFINITION

Area of feature in internal units squared.

ATTRIBUTE DEFINITION SOURCE Esri

ATTRIBUTE DOMAIN VALUES

UNREPRESENTABLE DOMAIN

Positive real numbers that are automatically generated.

ATTRIBUTE

ATTRIBUTE LABEL Year

ATTRIBUTE DEFINITION

Year survey was conducted

ATTRIBUTE DEFINITION SOURCE U.S. Fish and Wildlife Service

ATTRIBUTE DOMAIN VALUES

UNREPRESENTABLE DOMAIN

Year

ATTRIBUTE

ATTRIBUTE LABEL State_of_Eelgrass_Bed

ATTRIBUTE DEFINITION

Condition of the eelgrass patch, definitions/methods varied by survey.

ATTRIBUTE DEFINITION SOURCE U.S. Fish and Wildlife Service

ATTRIBUTE DOMAIN VALUES

UNREPRESENTABLE DOMAIN

Text description of eelgrass condition (ex: dense).

*Hide Entities and Attributes ▲***Distribution Information ►**

RESOURCE DESCRIPTION Offline Data

DISTRIBUTION LIABILITY

Although these data have been processed successfully on a computer system at the U.S. Fish and Wildlife, no warranty expressed or implied is made regarding the accuracy or utility of the data on any other system or for general or scientific purposes, nor shall the act of distribution constitute any such warranty. It is also strongly recommended that careful attention be paid to the contents of the metadata file associated with these data to evaluate data set limitations, restrictions or intended use. The U.S. Fish and Wildlife shall not be held liable for improper or incorrect use of the data described and/or contained herein

*Hide Distribution Information ▲***Metadata Reference ►**

METADATA DATE 2019-02-28

METADATA FUTURE REVIEW DATE 2023-02-28

METADATA STANDARD NAME FGDC Content Standard for Digital Geospatial Metadata

METADATA STANDARD VERSION FGDC-STD-001-1998

Hide Metadata Reference ▲